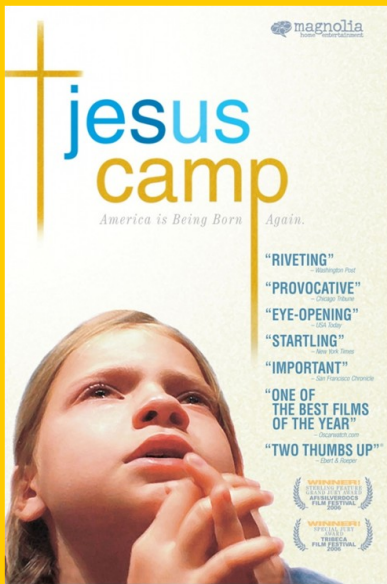


THL366

JESUS CAMP



What's going on here? What do you *affirm or condemn*? (or something else?)

What do you think of the *techniques or strategies* employed by Becky and her colleagues?

What part does '*consent*' play in determining our thoughts about such events?

In the same sense, what role does *context* play? (i.e. Is the US different to Australia in this respect?)

How do we determine what's appropriate ethically in educating towards Christianity with children, young people or adults?

How is working with *children and young people* different?

Other thoughts?